

## THE FIRST DIGITAL DECENNIUM 1998-2008

Consumer Electronics Show, January 2008

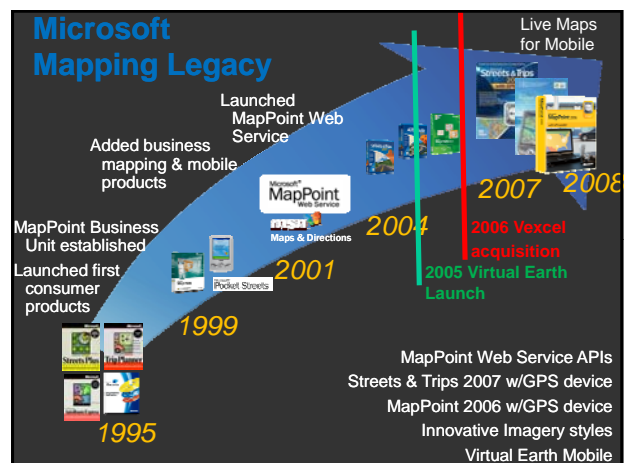


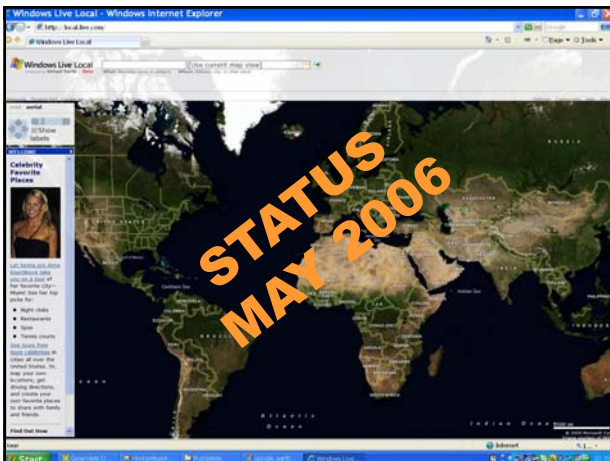
## THE INTERNET NOW IS LOCATION AWARE

Every Place, Anywhere, Anytime

maps.live.com

maps.live.com

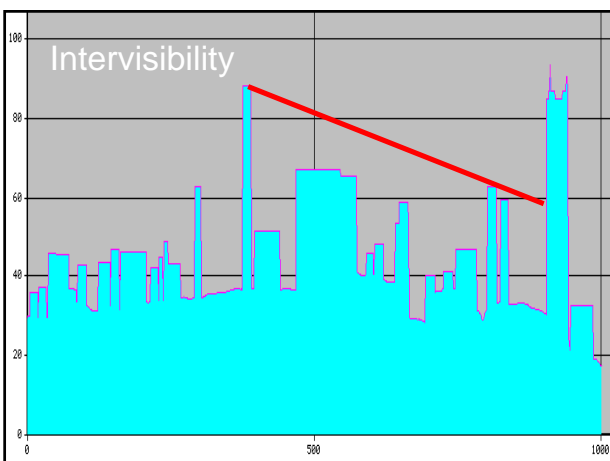


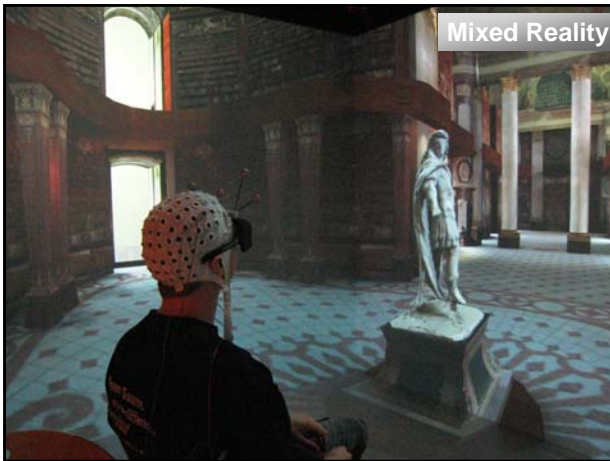


**VISIGRAPP 2009**

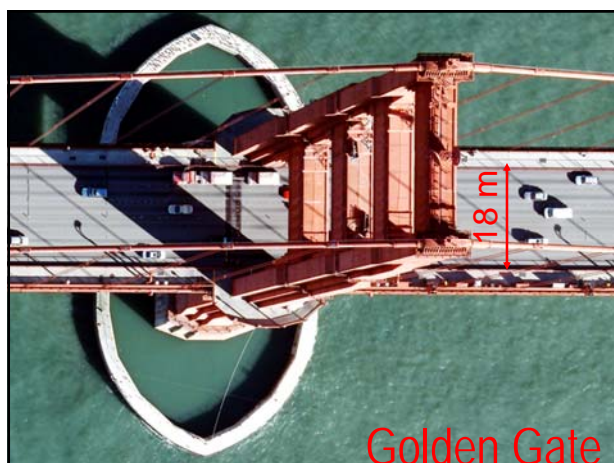
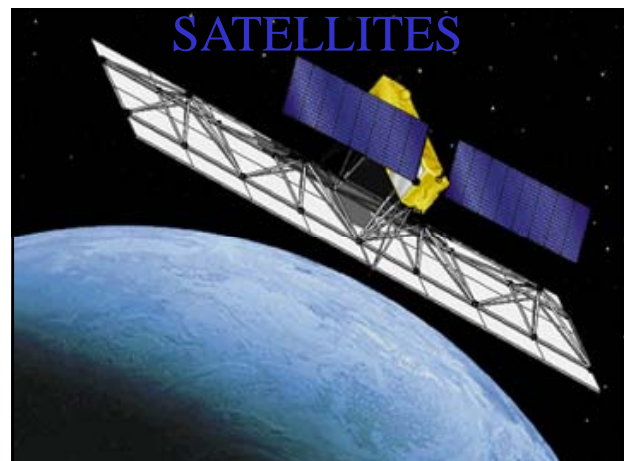
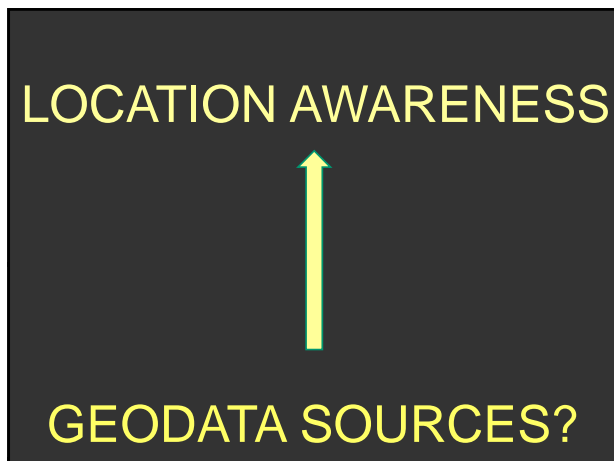
# 3D-MODELS OF THE HUMAN HABITAT FOR THE INTERNET

Franz Leberl  
Graz University of Technology  
Institute for Computer Graphics and Vision

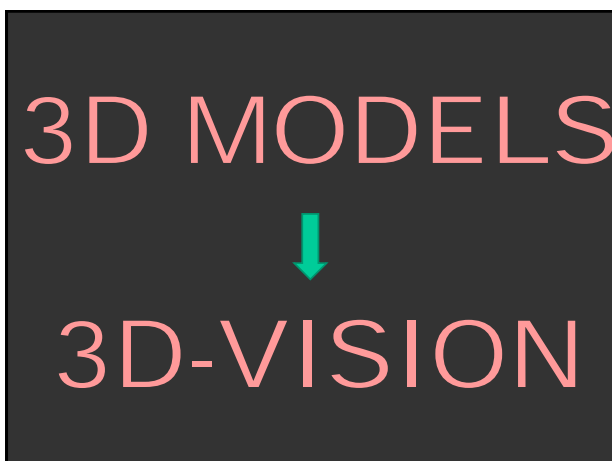
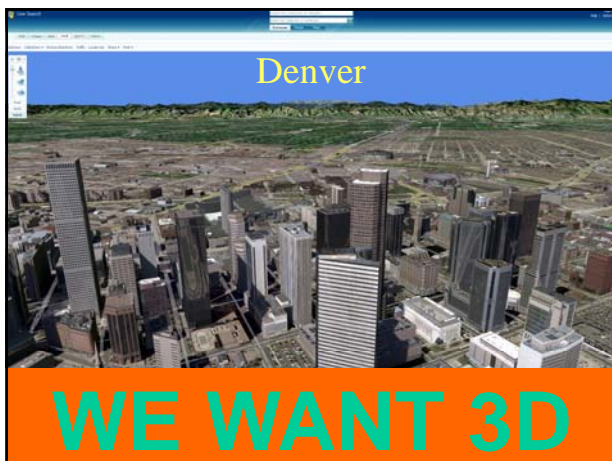














# DIGITAL 3D-V?

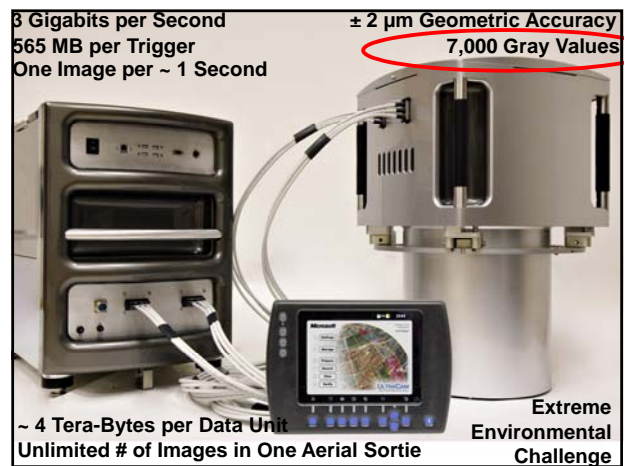
EXCELLENT AERIAL IMAGERY  
SMART IMAGE COLLECTION  
AUTOMATED TRIANGULATION  
DENSE MATCHING  
SUPERIOR GEOMETRY  
LIMITLESS DETAIL

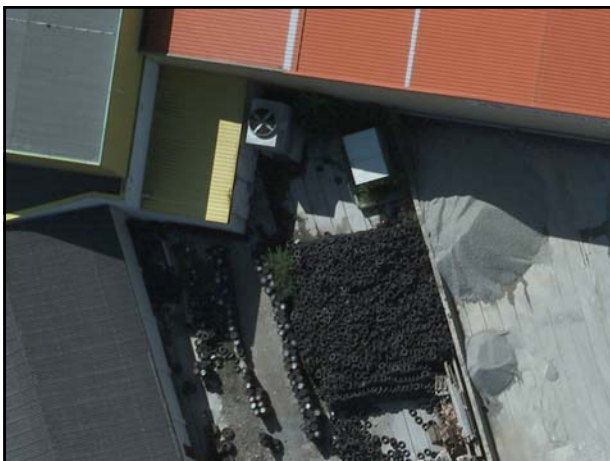
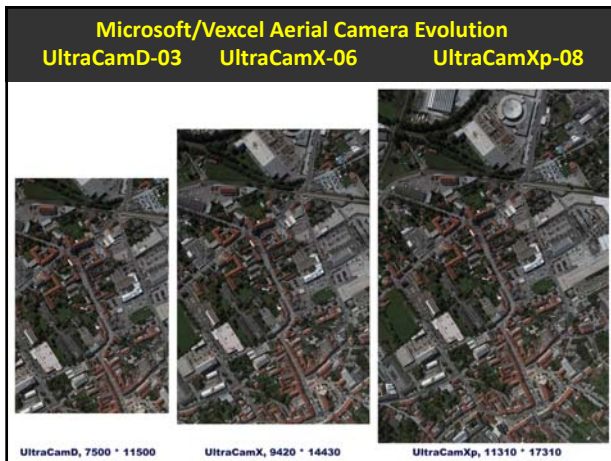


MICROSOFT DUE DILIGENCE

"What is so hard about  
large format digital aerial cameras?"

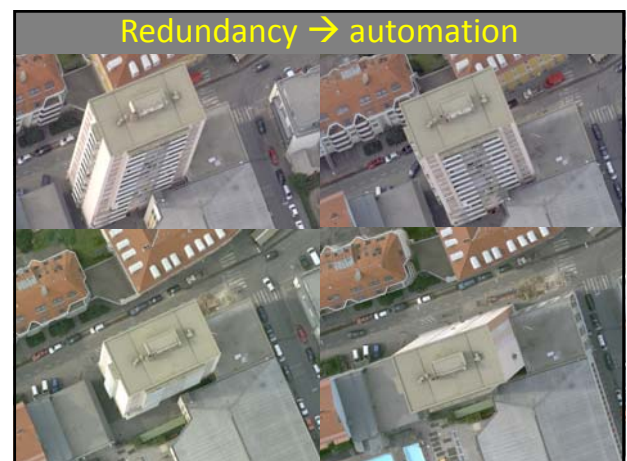
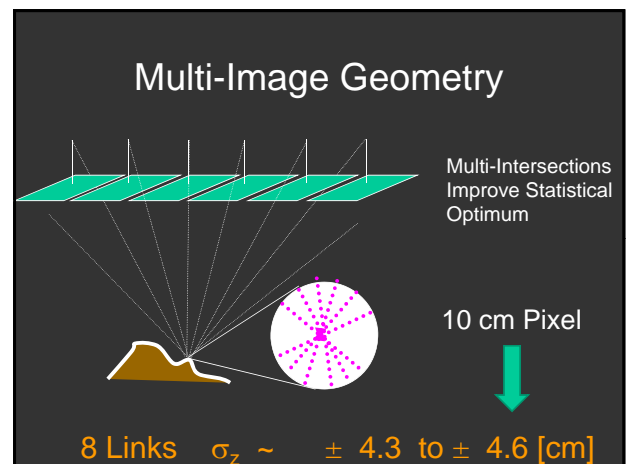
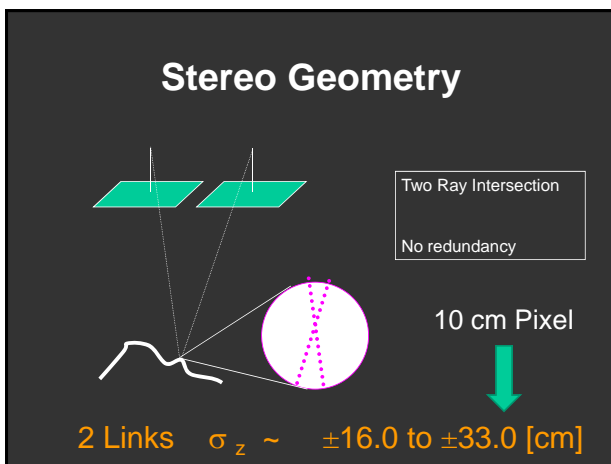
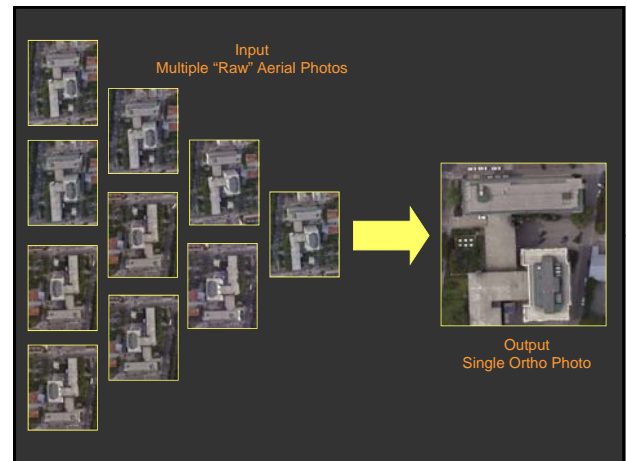
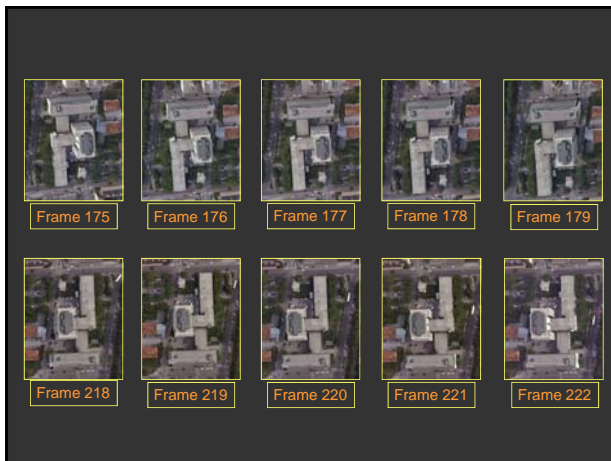
Bill Gates, Jan 2006













## THE EARTH'S LAND MASS

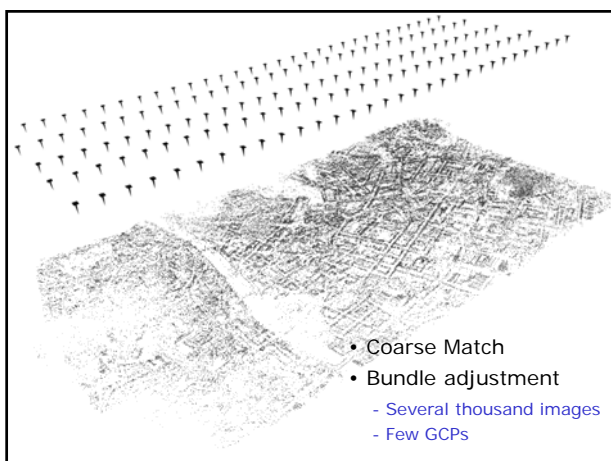
The World in 15 cm per Pixel  
towards 200 Peta Bytes, 2-D

Kilo  
Mega  
Giga  
Tera  
Peta  
Exa  
Zetta  
Yotta

→

## DIGITAL 3D-V?

EXCELLENT AERIAL IMAGERY  
SMART IMAGE COLLECTION  
AUTOMATED TRIANGULATION  
DENSE MATCHING  
SUPERIOR GEOMETRY  
LIMITLESS DETAIL





Dragonfly  
(Child of Seadragon)

## DIGITAL 3D-V?

EXCELLENT AERIAL IMAGERY  
SMART IMAGE COLLECTION  
AUTOMATED TRIANGULATION  
DENSE MATCHING  
SUPERIOR GEOMETRY  
LIMITLESS DETAIL

### Winston-Salem DSM to DEM



### Classification



### AUTOMATED BUILDING EXTRACTION

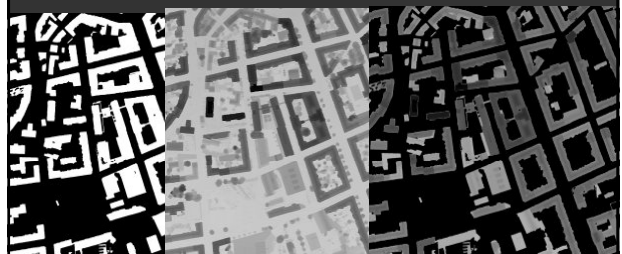
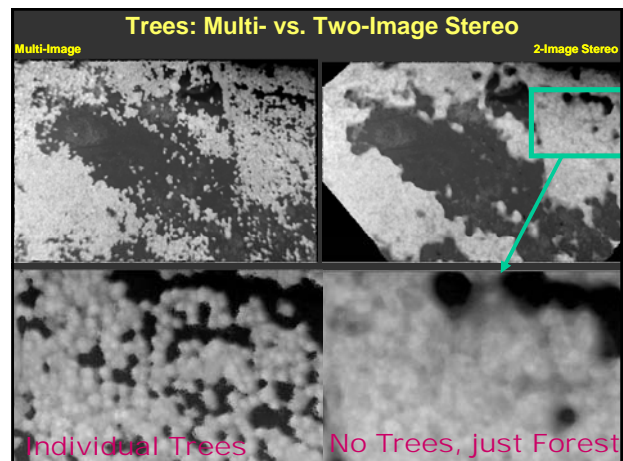
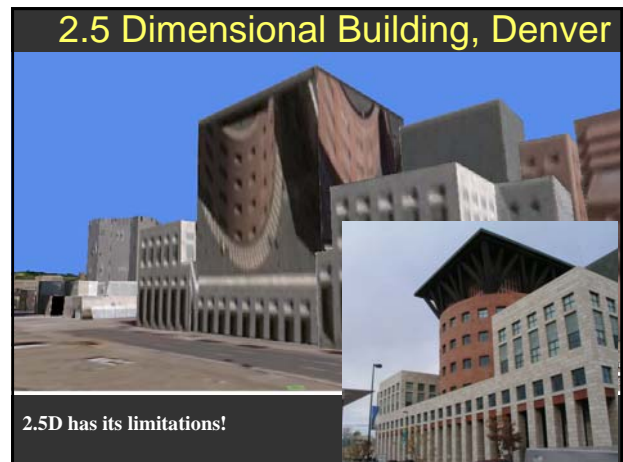


Image classification in combination with dense surface model supports buildings to be extracted



UltraCam Vegetation Modeling, M. Schardt

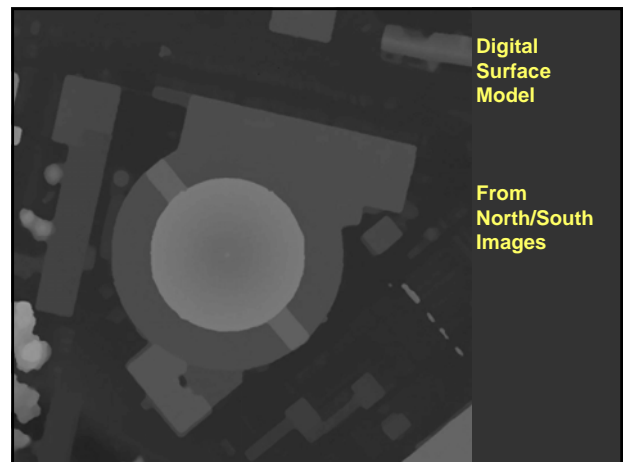


## DIGITAL 3D-V?

EXCELLENT AERIAL IMAGERY  
SMART IMAGE COLLECTION  
AUTOMATED TRIANGULATION  
DENSE MATCHING  
SUPERIOR GEOMETRY  
LIMITLESS DETAIL

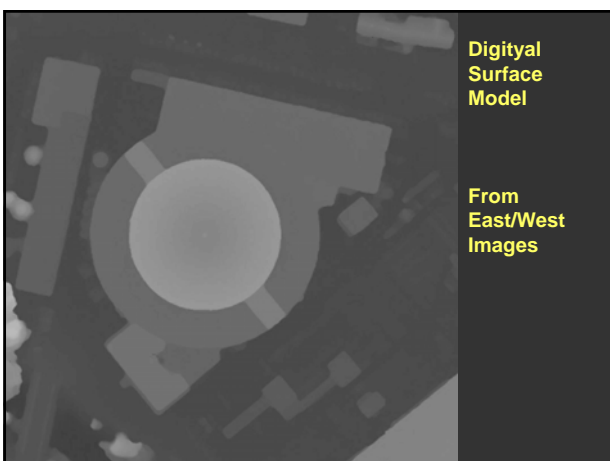


Two Flights  
North/South  
East/West  
Dense  
Surface  
Model  
@ 10 cm Pixel

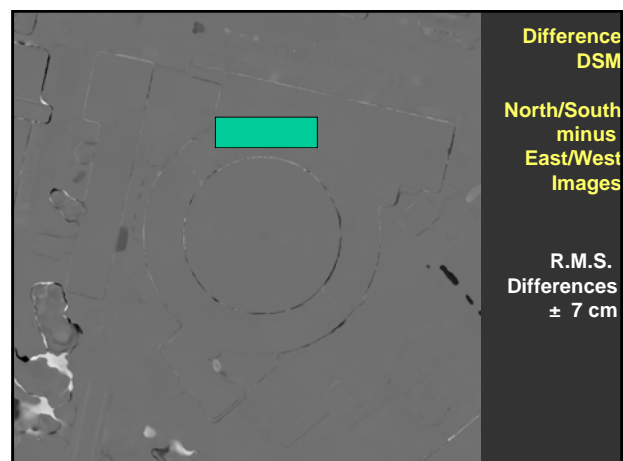


Digital  
Surface  
Model

From  
North/South  
Images



Digital  
Surface  
Model  
From  
East/West  
Images



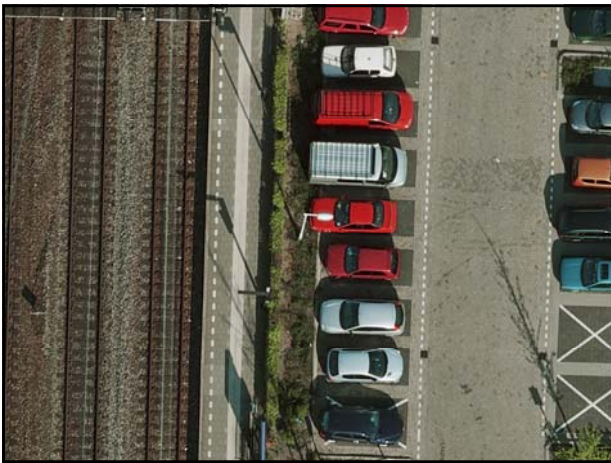
Difference  
DSM  
North/South  
minus  
East/West  
Images  
R.M.S.  
Differences  
 $\pm 7$  cm



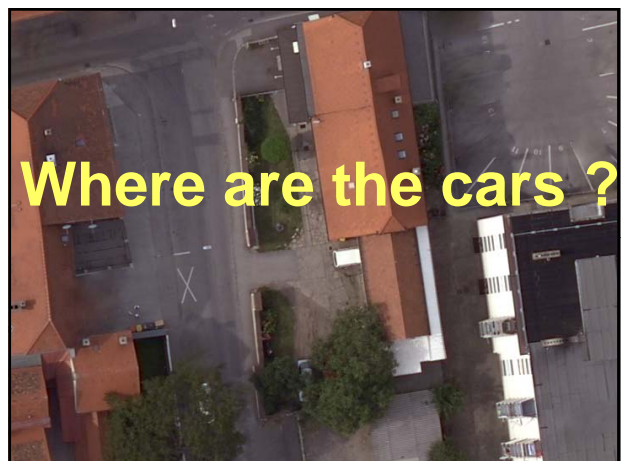


**DIGITAL 3D-V?**

EXCELLENT AERIAL IMAGERY  
 SMART IMAGE COLLECTION  
 AUTOMATED TRIANGULATION  
 DENSE MATCHING  
 SUPERIOR GEOMETRY  
 LIMITLESS DETAIL



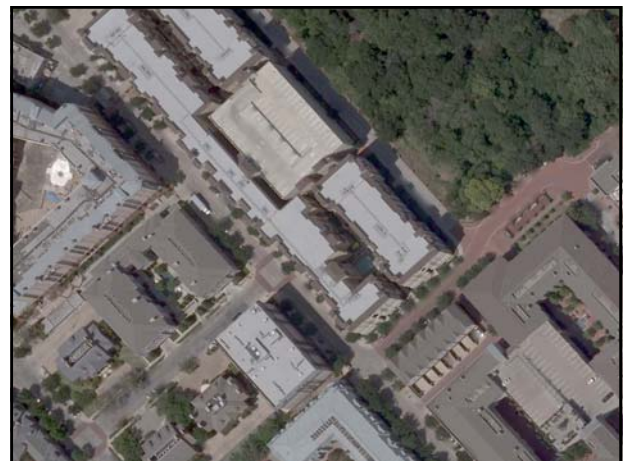
**NEW IDEAS  
 TO SOLVE NEW PROBLEMS**



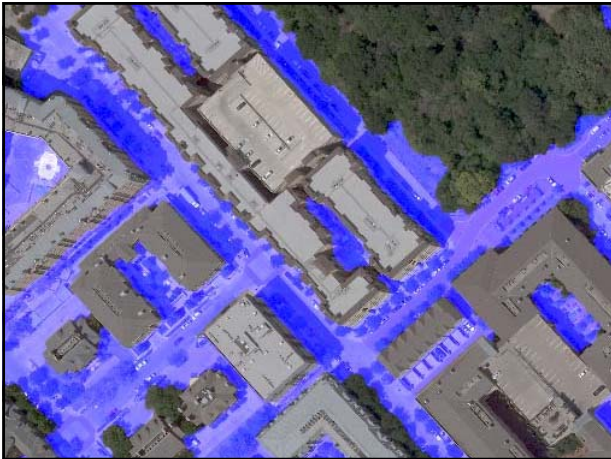


**90% Correct**

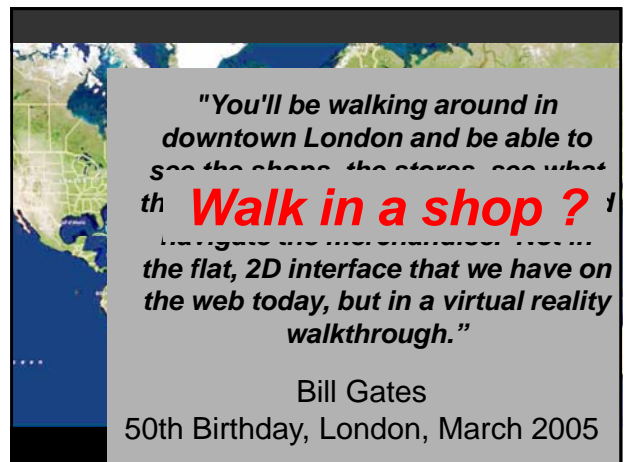
.....Substantial  
redundancy-inspired progress  
yet to be expected



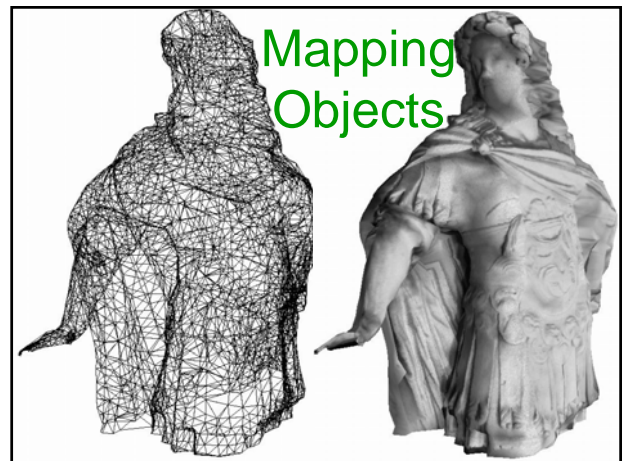
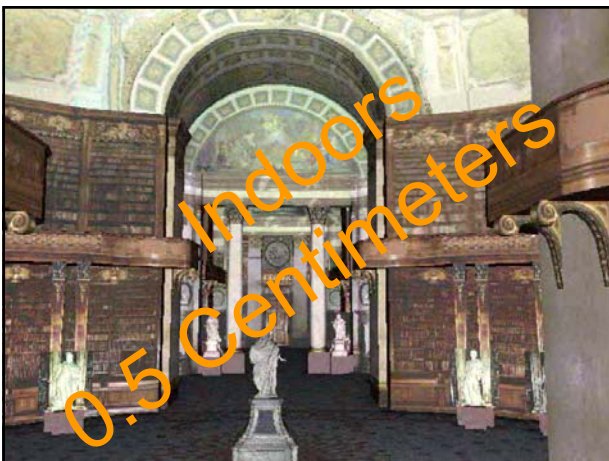
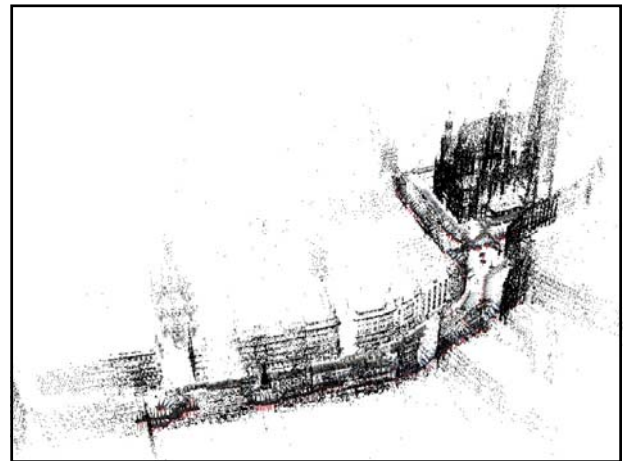
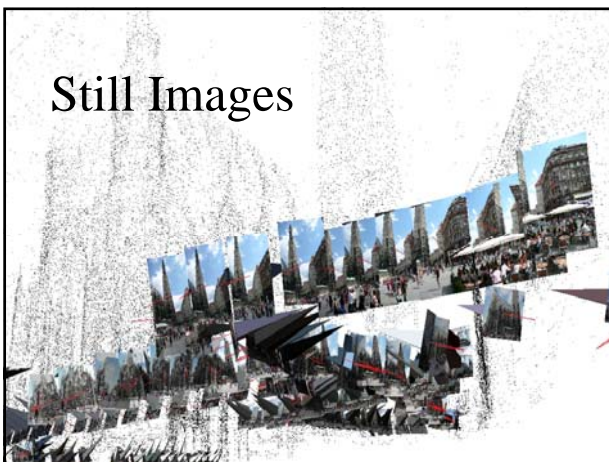
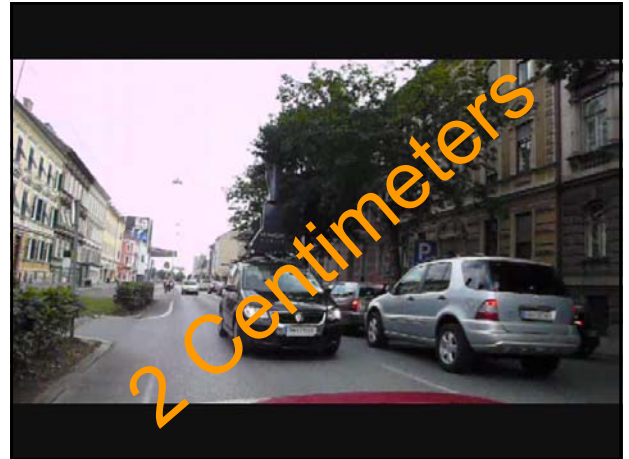




## THE HUMAN SCALE







## THE EARTH'S HUMAN HABITAT

The World in 15 cm per Pixel

Street Side in 2 cm

Interior in 0.5 cm

...and with 10 x redundancy

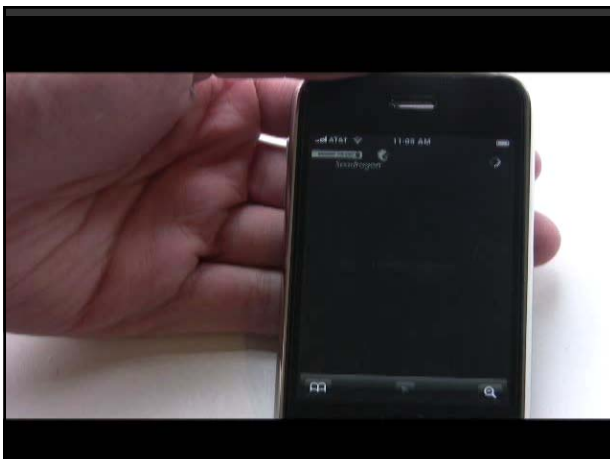


Towards 1 Exabyte

## ESP: Dynamic Seasonal Environments



## DATA EXCESS?



## THE FUTURE?

1977

Karl-Franzens University Graz

1977 JOINT  
AVAILABLE  
DISK SPACE

80 MEGABYTES

€ 100,000

Graz University of Technology



2007



OUR (THEN) UNIVERSITY  
VICE-PRESIDENT THEURL

2007

VICE-PRESIDENT THEURL  
Retired with 4 GB of data

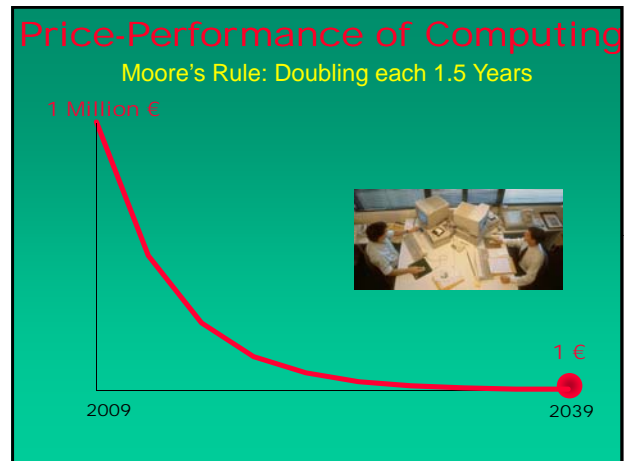
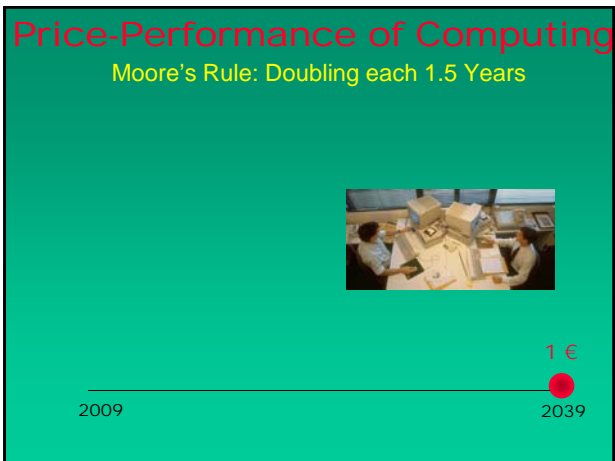
BUYS DISK SPACE  
500 GIGABYTE

€ 100

1977-2007  
Improvement  
12,500,000

DRIVERS FOR  
INNOVATIONS?





**2009-2039**

**1 MILLION?**

**“HONEY,  
PICK UP A 6-PACK OF  
COMPUTERS ON THE  
WAY HOME”**

Mark Weiser, 1996

